

PROKIT EP 110
The safety system
for temporary edge protection



Edition 07 | 2013

PERI GmbH
Formwork Scaffolding Engineering

P.O. Box 1264

89259 Weissenhorn

Germany

Tel. +49 (0) 7309.950-0

Fax +49 (0) 7309.951-0

info@peri.com

www.peri.com

Important Notes

Without exception, all current safety regulations and guidelines must be observed in those countries where our products are used.

The photos shown in this brochure feature construction sites in progress. For this reason, safety and anchor details in particular cannot always be considered as conclusive or final. These are subject to the risk assessment carried out by the contractor.

Safety instructions and load specifications are to be strictly observed at all times. Separate structural calculations are required for any deviations from the standard design data.

The information contained herein is subject to technical changes in the interests of progress. Errors and typographical mistakes reserved.

Content

PROKIT EP 110

- 2 The safety system
for temporary edge protection

Quick installation

- 4 Very few different system components
and self-securing posts

Flexibly mounted

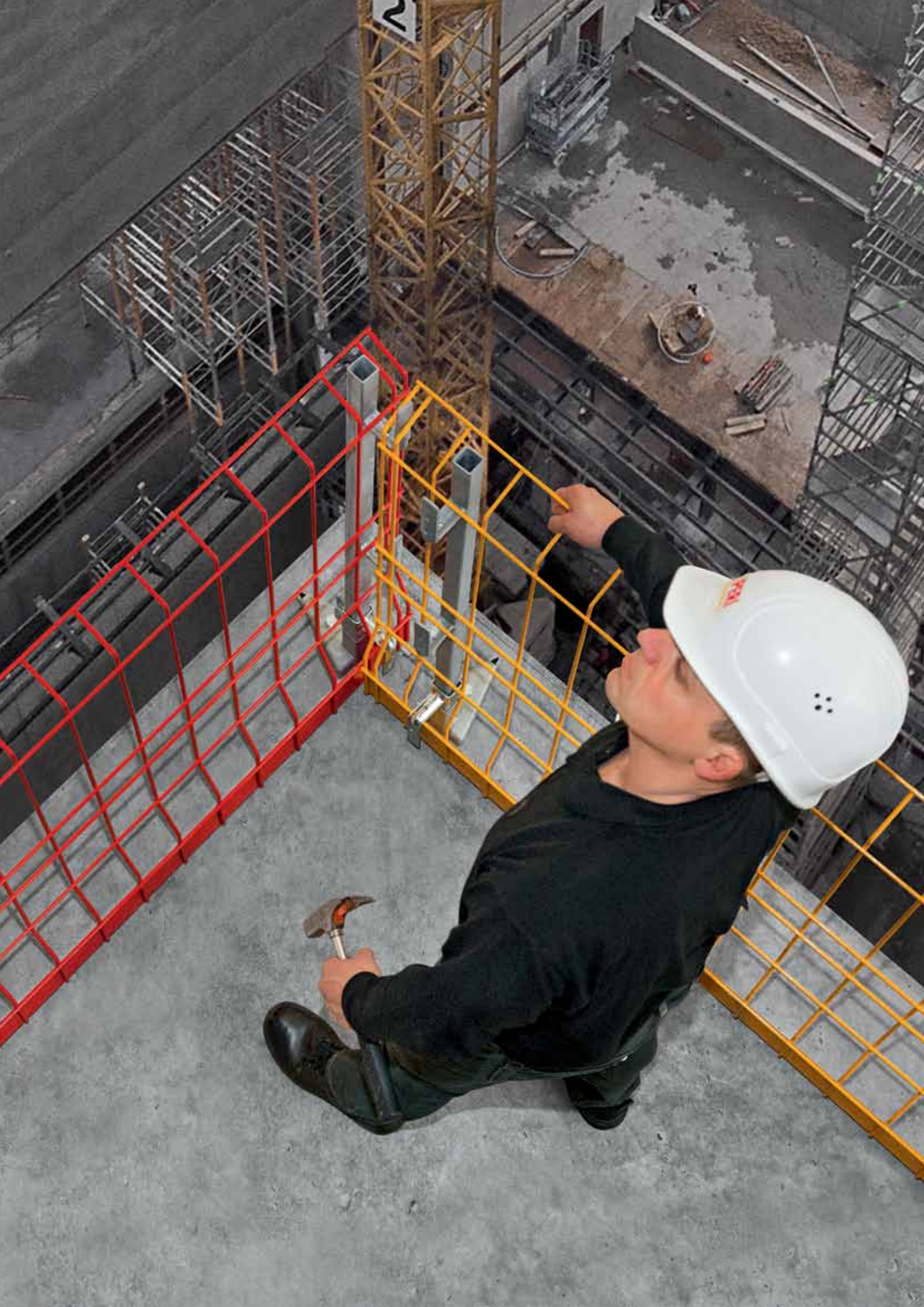
- 5 Numerous possibilities
for a wide range of mounting situations

Technically sound

- 6 Reliable safety barriers
on building shells and formwork

Economically-efficient solution

- 7 Multiple re-use,
efficiently executed
- 8 Components



PROKIT EP 110

The safety system for temporary edge protection

PERI PROKIT EP 110 is the 1.10 m high, quickly-assembled fall protection for open slab edges. Complete with side mesh barrier, guardrail post and assembly feet, a more flexible application can be realized - also for complicated structural geometries. By means of clamps, the system can also be mounted to parapets or sheet pilings. Furthermore, other accessories also allow the use of the side mesh barriers on almost all PERI formwork and scaffolding systems.

■ Quick installation

Few different, lightweight system components and self-securing guardrail posts for easy assembly

■ Flexibly mounted

Range of accessories for fixing to walls and slabs, with or without drilling

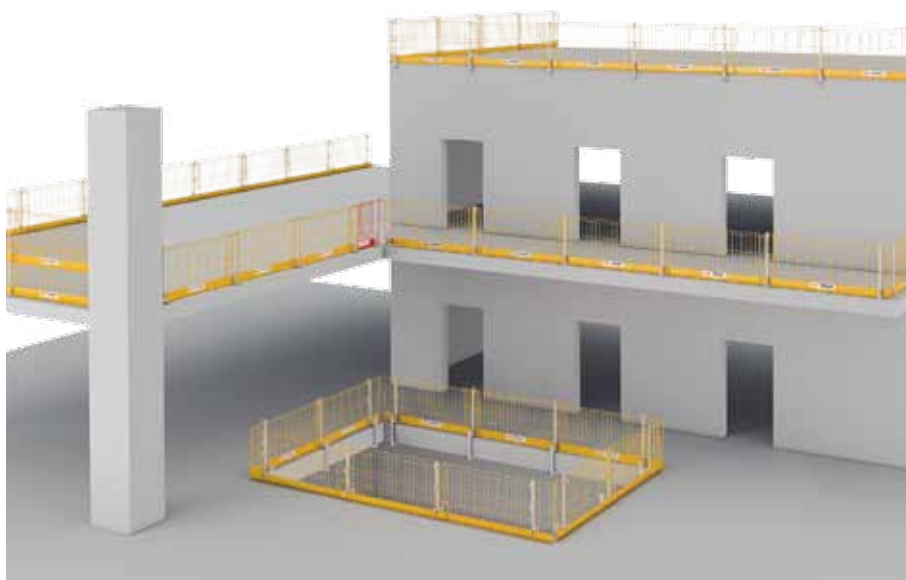
■ Technically sound

Reliable fall protection for open edges on building shells as well as formwork

■ Cost-effective

High rate of utilization and efficient logistics thanks to a minimum number of re-usable components

PROKIT EP 110 provides reliable protection for open slab edges. This accelerates working operations on building shells. (The graphic shows a system visualization)



Regular fall protection can also be realized on many PERI formwork systems with PROKIT side mesh barriers. When using TRG Scaffold Brackets, for example, they can be used on MAXIMO and TRIO wall formwork.



Quick installation

Very few different lightweight system components and self-securing posts

Installing the PROKIT EP 110 anti-fall protection is uncomplicated, very quick and safe: the posts are automatically secured when inserted into the feet after which the mesh barrier is simply fixed in position.

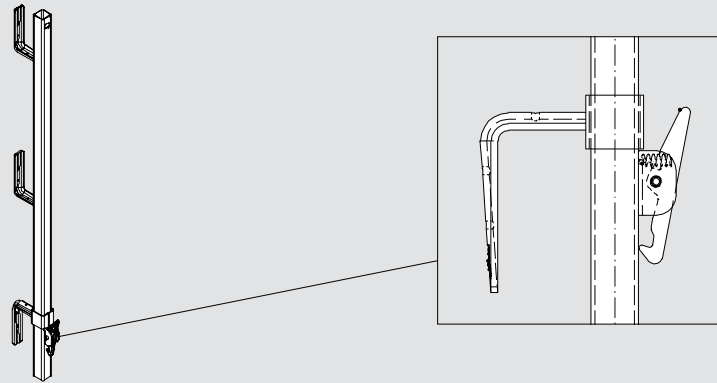
The standard side mesh barrier is 2.60 m long and weighs less than 20 kg which ensures easy and fatigue-free handling. The large post spacing of up to 2.40 m reduces material requirements as well as assembly time. A shorter barrier with a length of 1.30 m, is used as compensation so that only small overlaps are necessary.



PROKIT Post PP

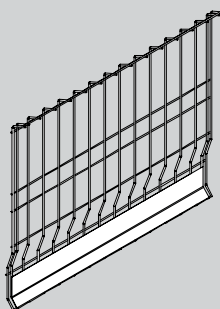
The PROKIT posts are 1.12 m high. Thanks to a simple, mechanical solution, they are immediately secured without requiring any other measures when inserted into the feet.

The side mesh barrier can be quickly suspended over the two brackets. Subsequently, the barrier is fixed to the integrated toe board by means of the bottom moveable bracket.



The close-meshed side mesh barriers are available in 260 cm and 130 cm lengths. The yellow or red powder coating offers excellent corrosion protection; in addition, it has a strong signal effect for hazardous areas.

Side Mesh Barrier PMB 130
powder-coated, red



Side Mesh Barrier PMB 260
powder-coated, yellow



Flexibly mounted

Numerous possibilities

for a wide range of mounting situations

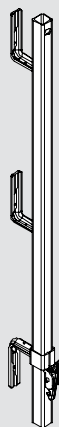
For the self-securing post, there is a range of mounting options. Depending on the requirement, there are accessories available, for example, for mounting on the slab, on the front side or on the parapets.



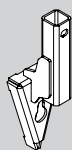
Slab feet and side feet can be mounted on reinforced concrete by means of PERI anchor bolts. If screw-in sleeves have been inserted into the fresh concrete, the slab foot can be mounted using standard M 16-8.8 bolts. This is a particular advantage, e.g. for concrete core activation.

PROKIT Post PP

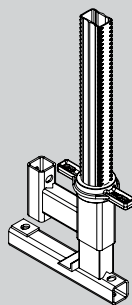
The standard supports for the PROKIT post is the slab foot and side foot. In addition, there are various mounting supports that are simply clamped on the concrete component as well as on a sheet piling.



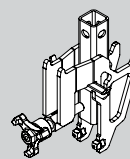
Slab Foot PDF
For mounting on the slab



Side Foot PSF
For mounting to slab, wall or flight of stairs.



Uni-Clamp PUC
For mounting on front side of slab or parapet with a clamping range of up 45 cm



Sheet Piling Clamp
For mounting on sheet piling

Technically sound

Reliable securing of edges on building shells and formwork

PROKIT EP 110 fulfils Class A of DIN EN 13374 which requires a guardrail positioned at least 1.00 m above the working surface, an intermediate guardrail and a toe board with a minimum height of 150 mm. The system thus provides protection against falling with an inclination angle of up to 10%. Compared to the use of rope equipment, one particular advantage is considerably more freedom of movement for the construction team.

In addition, the side mesh barrier is also compatible with many PERI formwork and scaffolding systems, and correspond to EN 12811.



PROKIT EP 110 provides protection on all open edges of the working platforms of this tunnel formwork



With wall formwork, the use of the side mesh barrier is also possible as an opposing guardrail.



The side mesh barrier as anti-fall protection on a slab table which has been mounted with the appropriate guardrail posts.

Economically-efficient solution

Multiple re-use, efficiently executed

On request, the mesh barrier can be powder-coated in other standard RAL colours. Thus, the anti-fall protection can also be used as an effective advertising medium.

PROKIT system components are extremely versatile, re-usable many times and allow the highest rates of utilization. In addition, the small number of system components simplifies the entire on-site material requirements and logistics.

Furthermore, the powder coating of the side mesh barrier and the galvanizing of all the other system components provide excellent protection against corrosion thus ensuring a long service life. All of this makes PROKIT EP 110 a very worthwhile investment.

Thanks to the pallet used for storage and transport, stacking of the side mesh barriers is a very simple procedure. This minimizes storage space and transport volumes and also prevents from damage.



A total of 25 mesh barriers can be quickly and compactly accommodated in the Pallet EP 110 - in exactly the position in which they are installed on the slab edge. The pallet dimensions have been optimized for transportation by truck, have the base area of a Euro pallet and also are stackable.



Stairwell areas can be secured with handrail boards which are easy to attach to the posts.



The holding brackets on the posts have nail and screw holes already in place so that handrail boards can be quickly fixed.



With the help of the post extension and a second mesh barrier, the side protection can be increased to a height of 1.75 m.

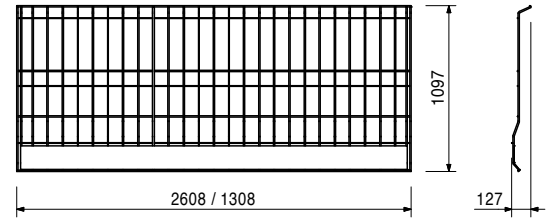
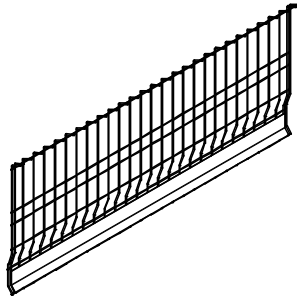
| Item no. | Weight kg |
|----------|-----------|
|----------|-----------|

| | |
|--------|--------|
| 117326 | 19,700 |
| 117327 | 10,500 |

Side Mesh Barrier PMB
Side Mesh Barrier PMB 260
Side Mesh Barrier PMB 130

Technical Data

Maximum post spacing with Side Mesh Barrier:
 PMB 260 max. 2.40 m, PMB 130 max. 1.20 m.

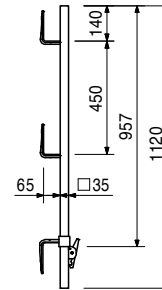


| | |
|--------|-------|
| 117325 | 4,270 |
|--------|-------|

Post PP
 For fixing the Side Mesh Barrier.

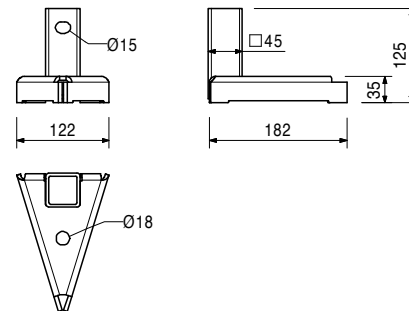
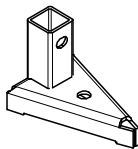
Technical Data

Maximum post spacing with Side Mesh Barrier:
 PMB 260 max. 2.40 m, PMB 130 max. 1.20 m.



| | |
|--------|-------|
| 117323 | 1,530 |
|--------|-------|

Slab Foot PDF
 For mounting safety barriers to slab edges.



Accessories

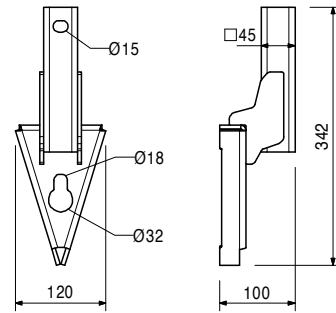
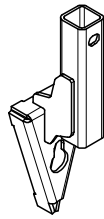
| | |
|--------|-------|
| 117020 | 0,213 |
| 117325 | 4,270 |

Anchor Bolt PERI 14 x 150
Post PP

| Item no. | Weight kg |
|----------|-----------|
| 117324 | 2,210 |

Side Foot PSF

For mounting safety barriers to walls and stairs.



Accessories

| | |
|--------|-------|
| 117020 | 0,213 |
| 117325 | 4,270 |

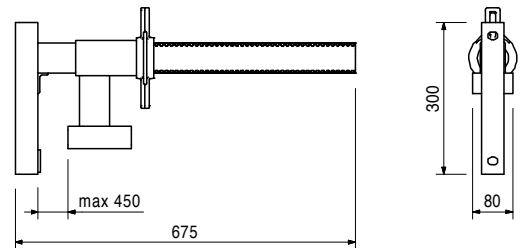
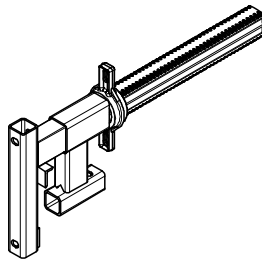
Anchor Bolt PERI 14 x 150

Post PP

| | |
|--------|-------|
| 118660 | 6,610 |
|--------|-------|

Uni-Clamp PUC

For mounting safety barriers to the front side of the slab or on a parapet.



Accessories

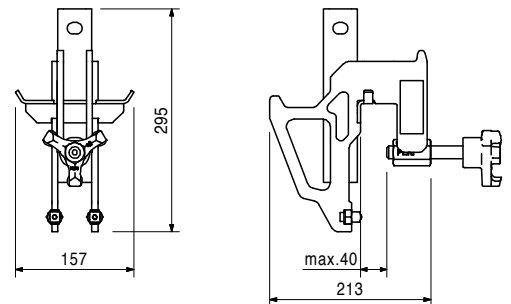
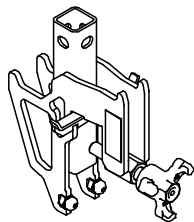
| | |
|--------|-------|
| 117325 | 4,270 |
|--------|-------|

Post PP

| | |
|--------|-------|
| 126330 | 4,460 |
|--------|-------|

Sheet Piling Clamp PSC

For mounting safety barriers to sheet piling.



Accessories

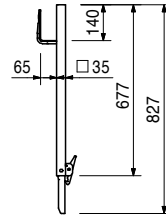
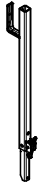
| | |
|--------|-------|
| 117325 | 4,270 |
|--------|-------|

Post PP

| Item no. | Weight kg |
|----------|-----------|
| 118296 | 2,910 |

Post Extension PPE

For increasing the height of the side protection to 1.75 m.



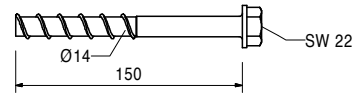
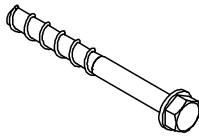
| | |
|--------|-------|
| 117020 | 0,213 |
|--------|-------|

Anchor Bolt PERI 14 x 150

Re-usable. Construction Approval is available on request.

Note

For permissible load, see data sheet. Wrench size SW 22.



| | |
|--------|-------|
| 123970 | 0,047 |
|--------|-------|

Screw-In Sleeve PERI M16/164

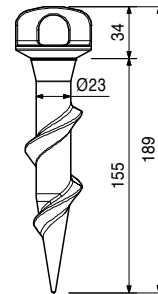
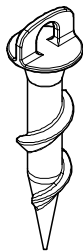
For temporary assembly of components on reinforced concrete slabs.

Note

After concreting has taken place, it is inserted in the fresh concrete.

Technical Data

See data sheet.



Accessories

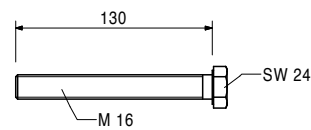
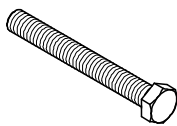
| | |
|--------|-------|
| 123973 | 0,240 |
|--------|-------|

Bolt ISO 4017 M16 x 130-8.8, galv.

| | |
|--------|-------|
| 123973 | 0,240 |
|--------|-------|

Bolt ISO 4017 M16 x 130-8.8, galv.

Used in connection with the Screw-In Sleeve PERI M16/164 for assembling the Slab Foot PDF.



| Item no. | Weight kg |
|----------|-----------|
| 123960 | 70,500 |

Pallet EP 110

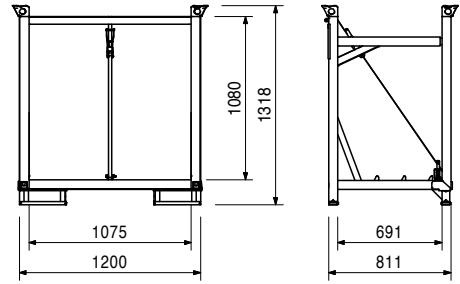
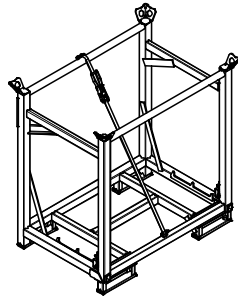
For stacking and transportation of 25 x Side Mesh Barrier PMB.

Complete with

1 x 117560 Lashing Strap 25 x 2550 mm

Technical Data

Load-bearing capacity 600 kg.



PERI International

PERI

01 Germany
PERI GmbH
 Rudolf-Diesel-Strasse
 89264 Weissenhorn
 info@peri.com
 www.peri.com



02 France
 PERI S.A.S.
 77109 Meaux Cedex
 peri.sas@peri.fr
 www.peri.fr

09 Italy
 PERI S.p.A.
 20060 Basiano
 info@peri.it
 www.peri.it

16 Austria
 PERI Ges.mBH
 3134 Nußdorf ob der Traisen
 office@peri.at
 www.peri.at

23 Korea
 PERI (Korea) Ltd.
 Seoul 135-936
 info@perikorea.com
 www.perikorea.com

30 Slovakia
 PERI spol. s. r.o.
 903 01 Senec
 info@peri.sk
 www.peri.sk

03 Switzerland
 PERI AG
 8472 Ohringen
 info@peri.ch
 www.peri.ch

10 Japan
 PERI Japan K.K.
 Tokyo 103-0015
 info@perijapan.jp
 www.perijapan.jp

17 Czech Republic
 PERI spol. S r.o.
 252 42 Jesenice u Prahy
 info@peri.cz
 www.peri.cz

24 Portugal
 Pericofragens Lda.
 2790-326 Queijas
 info@peri.pt
 www.peri.pt

31 Australia
 PERI Australia Pty. Ltd.
 Glendenning NSW 2761
 info@periaus.com.au
 www.periaus.com.au

04 Spain
 PERI S.A.U.
 28110 Algete - Madrid
 info@peri.es
 www.peri.es

11 United Kingdom/Ireland
 PERI Ltd.
 Rugby, CV23 0AN
 info@peri.ltd.uk
 www.peri.ltd.uk

18 Denmark
 PERI Danmark A/S
 2670 Greve
 peri@peri.dk
 www.peri.dk

25 Argentina
 PERI S.A.
 B1625GPA Escobar – Bs. As.
 info@peri.com.ar
 www.peri.com.ar

32 Estonia
 PERI AS
 76406 Saku vald
 Harjumaa
 peri@peri.ee
 www.peri.ee

05 Belgium/Luxembourg
 N.V. PERI S.A.
 1840 Londerzeel
 info@peri.be
 www.peri.be

12 Turkey
 PERI Kalip ve Iskeleleri Sanayi
 ve Ticaret Ltd.
 Esenyurt / Istanbul 34510
 info@peri.com.tr
 www.peri.com.tr

19 Finland
 PERI Suomi Ltd. Oy
 05460 Hyvinkää
 info@perisuomi.fi
 www.perisuomi.fi

26 Brazil
 PERI Formas e
 Escoramentos Ltda.
 Vargem Grande Paulista – SP
 info@peribrasil.com.br
 www.peribrasil.com.br

33 Greece
 PERI Hellas Solely Owned Ltd.
 194 00 Koropi
 info@perihellas.gr
 www.perihellas.gr

06 Netherlands
 PERI Holding B.V.
 5480 AH-Schijndel
 info@peri.nl
 www.peri.nl

13 Hungary
 PERI Kft.
 1181 Budapest
 info@peri.hu
 www.peri.hu

20 Norway
 PERI Norge AS
 3036 Drammen
 info@peri.no
 www.peri.no

27 Chile
 PERI Chile Ltda.
 Colina, Santiago de Chile
 perichile@peri.cl
 www.peri.cl

34 Latvia
 PERI SIA
 2118 Salaspils novads, Rigas rajons
 info@peri-latvija.lv
 www.peri-latvija.lv

07 USA
 PERI Formwork Systems, Inc.
 Elkridge, MD 21075
 info@peri-usa.com
 www.peri-usa.com

14 Malaysia
 PERI Formwork Malaysia Sdn. Bhd.
 43300 Seri Kembangan,
 Selangor Darul Ehsan
 info@perimalaysia.com
 www.perimalaysia.com

21 Poland
 PERI Polska Sp. z o.o.
 05-860 Plochocin
 info@peri.com.pl
 www.peri.com.pl

28 Romania
 PERI România SRL
 077015 Balotești
 info@peri.ro
 www.peri.ro

35 United Arab Emirates
 PERI (L.L.C.)
 Dubai U.A.E.
 perillc@perime.com
 www.perime.com

08 Indonesia
 PT Beton Perkasa Wijaksana
 Jakarta 10210
 bpw@betonperkasa.com
 www.peri.com

15 Singapore
 PERI ASIA Pte. Ltd
 Singapore 387355
 pha@periasia.com
 www.periasia.com

22 Sweden
 PERIform Sverige AB
 30262 Halmstad
 peri@peri.se
 www.periform.se

29 Slovenia
 PERI Agency
 2000 Maribor
 peri.slo@triera.net
 www.peri.com

36 Canada
 PERI Formwork Systems, Inc.
 Bolton, ON – L7E 1K1
 info@peri.ca
 www.peri.ca



- | | | | | |
|-------------------------------------------------------------------------------------------------------------------------------|-------------------------------------------------------------------------------------------------------------------------------------------------|---------------------------------------------------------------------------------------------------------------------------|------------------------------------------------------------------------------------------------------------------------------------|----------------------------------------------------------------------------------------------------------------------------------------------|
| <p>37 Lebanon PERI Representative Office 90416 – Jdeideh lebanon@peri.de www.peri.com</p> | <p>44 Russian Federation OOO PERI 142407, Noginsk District moscow@peri.ru www.peri.ru</p> | <p>51 Turkmenistan PERI Kalıp ve İskeleleri Aşgabat ahmet.kadioglu@peri.com.tr www.peri.com.tr</p> | <p>57 Saudi Arabia PERI Saudi Arabia Com. Ltd. 21463 Jeddah info@peri.com.sa www.peri.com.sa</p> | <p>64 Nigeria Heights Access Nigeria Ltd. Victoria Island, Lagos info@heightsaccessng.com www.heightsaccessng.com</p> |
| <p>38 Lithuania PERI UAB 02300 Vilnius info@peri.lt www.peri.lt</p> | <p>45 South Africa PERI (Pty) Ltd 7600 Stellenbosch info@peri.co.za www.peri.co.za</p> | <p>52 Belorussia IOOO PERI Belarus 220100 Minsk info@peri.by www.peri.by</p> | <p>58 Qatar PERI Qatar LLC P.O.Box: 31295 - Doha info@periqatar.com www.periqatar.com</p> | <p>65 Oman PERI (L.L.C.) Muscat perimct@perime.com www.perime.com</p> |
| <p>39 Morocco PERI S.A.U. Tanger peri25@menara.ma www.peri.com</p> | <p>46 Ukraine PERI Ukraina 07400 Brovary peri@peri.ua www.peri.ua</p> | <p>53 Croatia PERI oplate i skele d.o.o. 10 250 Lučko-Zagreb info@peri.com.hr www.peri.com.hr</p> | <p>59 Algeria SarI PERI Kouba 16092, Alger info@peri.com www.peri.com</p> | <p>66 Colombia PERI S.A.S. Colombia Chapinero Alto, Bogotá peri.colombia@peri.com.co www.peri.com.co</p> |
| <p>40 Israel PERI Formwork Engineering Ltd. Rosh Ha'ayin, 48104 info@peri.co.il www.peri.co.il</p> | <p>47 Egypt Egypt Branch Office 11341 Nasr City /Cairo info@peri.com.eg www.peri.com.eg</p> | <p>54 India PERI (India) Pvt Ltd Mumbai – 400064 info@peri.in www.peri.in</p> | <p>60 Albania PERI formwork and scaffolding Sh.p.k. Tirane erti.hasanaj@peri.com.tr www.peri.com.tr</p> | |
| <p>41 Bulgaria PERI Bulgaria EOOD 1839 Sofia peri.bulgaria@peri.bg www.peri.bg</p> | <p>48 Serbia PERI – Oplate d.o.o. 22310 Šimanovci office@peri.rs www.peri.rs</p> | <p>55 Jordan PERI GmbH - Jordan 11947 Amman jordan@peri.com www.peri.com</p> | <p>61 Peru PERI Peruana S.A.C. Villa El Salvador, Lima contacto@peri.com.pe www.peri.com.pe</p> | |
| <p>42 Iceland Armar ehf. 220 Hafnarfjörður armar@armar.is www.armar.is</p> | <p>49 Mexico PERI Cimbras y Andamios, S.A. de C.V. Estado de México, Huehuetoca info@peri.com.mx www.peri.com.mx</p> | <p>56 Kuwait PERI Kuwait Company WLL 13011 Kuwait kuwait@peri.com www.peri.com</p> | <p>62 Panama PERI Panama Inc. 0832-00155 Panama City info@peri.com.pa www.peri.com.pa</p> | |
| <p>43 Kazakhstan TOO PERI Kazakhstan 050000 Almaty peri@peri.kz www.peri.kz</p> | <p>50 Azerbaijan PERI Representative Office Baku peribaku@peri.com.tr www.peri.com.tr</p> | <p>63 Angola Pericofragens, Lda. Luanda renato.portugal@peri.pt www.peri.pt</p> | | |

The optimal System for every Project and every Requirement



Wall Formwork



Column Formwork



Slab Formwork



Climbing Systems



Tunnel Formwork



Bridge Formwork



Shoring Systems



Construction Scaffold



Facade Scaffold



Industrial Scaffold



Access



Protection Scaffold



System-Independent Accessories



Services



PERI GmbH
Formwork Scaffolding Engineering
 P.O. Box 1264
 89259 Weissenhorn
 Germany
 Tel. +49 (0)7309.950-0
 Fax +49 (0)7309.951-0
 info@peri.com
 www.peri.com